



Runway guard light
IDM 6301
RGL Controller
IDM 8025



Specification

- ICAO Annex 14 Volume I 4th ed. July 2004 chapter 5.3.22.1.

Application

- At runway / taxiway intersections in configuration A.

Mechanical construction

- Body specially corrosion resistant aluminium alloy.
- Aviation yellow powder coating.
- Stainless steel hardware.
- Silicone rubber gaskets.
- Relamping without touching the optics.
- Option: visor.

Optical construction

- Anodized aluminium reflector.
- Through coloured front glass - no separate colour filters.
- 45W or 100W / 6,6 A prefocused halogen lamp, Pk30d base.
- Average lifetime 1000 hours at rated current.

Controller IDM 8025

- Connected directly to series circuit via an isolation transformer
- Available for Configuration A
- Flashing frequency 52 flashes/min

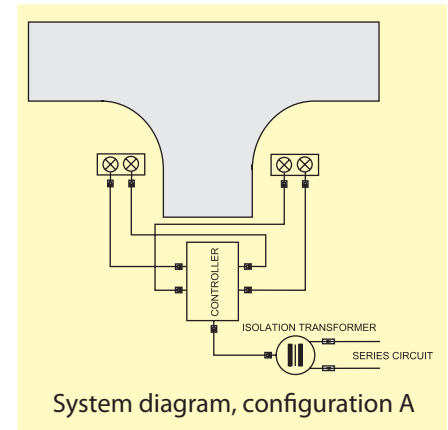
Technical data

- Connection Series Circuit 6,6A / 6,6A
- Flashing frequency 52 / min
- Lamp power 45W (> 300cd)
- 100W (> 3000 cd, configuration A)
- Light fitting type 2xIDM 6301/2x45W-Y (conf. A) 2xIDM 6301/2x100W-Y (conf. A, HI)
- Isolation transformer 200W, conf. A 300W, conf. A High Intensity
- Capsulation size 65x125x185 mm
- Protection degree IP 65
- Operating temperature range -35°C to +55°C

Ordering information

IDM 6301 / 2 x 45 W - Y

45 W		
100 W		



Intensity distribution

